

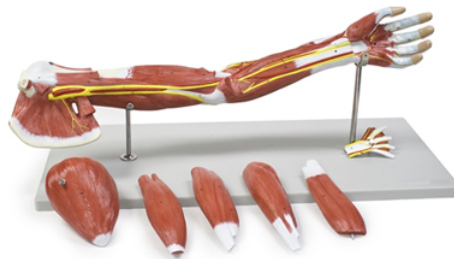
Item Name : Muscle Of The Human Arm 7 Parts

Item Code : 4032.2008.01

Item Description :

This 7-part life size model shows, in great detail, the anatomical structure of the arm, complete with superficial and deeper muscles, vascular structures, nerves and ligaments. The hand and the shoulder are also well represented. The following parts are removable: - Deltoid muscle - Biceps muscle - Triceps muscle - Long palmar muscle with radial flexor muscle of wrist - Brachioradial muscle with radial extensor muscle of wrist - Palmar aponeurosis.

Item Image :



Cat. No.

4032.2008.01