

Item Name : Female Reproductive System

Item Code : 4232.2008.01

Item Description :

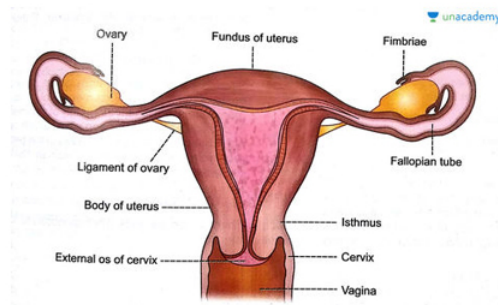
1. Internal Parts

- a. Uterus-Major female reproductive organ, one end called cervix opens into vagina and other end is connected to the fallopian tubes, Development of fetus occurs within uterus
- b. Ovaries- Two in number, Egg producing female reproductive organ, oval in shape and ovary of each side is located in the ovarian fossa of corresponding side of pelvis

2. External Parts

- a. External genital organ of females, contains the opening of vagina
 - b. Labia-Structures of skin and adipose tissue that extends on both sides of vulva
 - c. Clitoris- Button like portion near the labia minora, erects on sexual arousalment
- Functions- Recieve the sperms from male reproductive system, Bear the developin fetus through the entire period of gestation

Item Image :



Cat. No.

4232.2008.01