

Item Name : Male Reproductive System

Item Code : 4231.2008.01

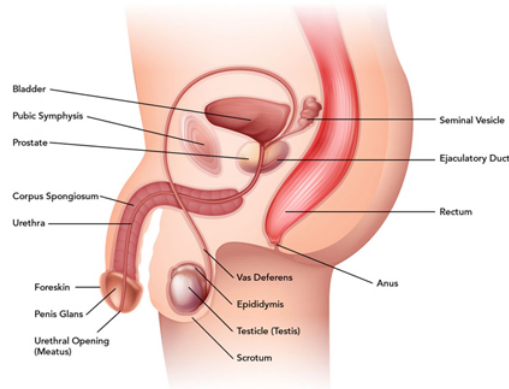
Item Description :

a. Penis- Male copulatory organ having a long shaft and a bulbous tip, transfers the semen into the femal reproductive tract

b. Testes- Components of both reproductive system and endocrine system, produce semen that ocntains sperms

Functions- Fertilization of females to produce offspring

Male Reproductive System



Item Image :

Cat. No.

4231.2008.01