

Item Name : Respiratory System

Item Code : 4225.2008.01

Item Description :

Nose-The most external organ, air is inhaled and exhaled through

nose, has different mechanisms for cleaning and condensing the inhaled air

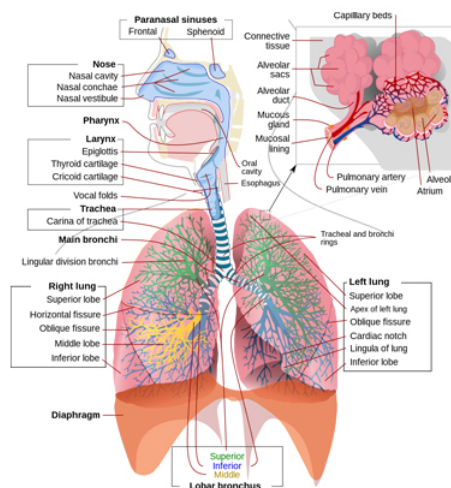
- Larynx-Also known as sound box, formed of cartilages, connects the tracheo to the laryngopharynx
- Trachea-Tubular structure with about 1 inch diameter, composed of 15-20 C shaped cartilages that keep it dilated
- Bronchi-Left and Right divisions of trachea, enters the lungs and divide into secondary bronchi
- Lungs-Main organs of respiration, two in number (one on each side of heart) Conical in shape, divided into lobes

Parts Conductive Parts-Parts of respiratory system where exhcange of gases does not take place, include Nose, larynx, trachea, and bronchi.

Respiratory Parts- Parts of respiratory system where exchange of gases takes place, Incude Lungs

Functions- Gaseous Exchange, Excretion of carbon dioxide, Oxygenation of blood

Item Image :



Cat. No.

4225.2008.01

44, Vikas puri, P.O.Ind.Estate, Jagadhri Road,
A/Cantt-133 006. Haryana, India.

+0171 – 2698107

info@glacierindia.com

<https://www.glacierindia.com>