

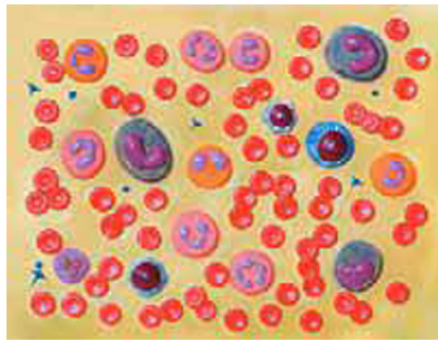
Item Name : Human blood cells

Item Code : 4188.2008.01

Item Description :

Enlarged 2000 times, this model shows the various types of blood cells, including red blood cells; white blood cells (lymphocytes, monocytes, neutrophils, eosinophils and basophils); and blood platelets. Mounted on board.

Item Image :



Cat. No.

4188.2008.01