

**Item Name :** Head Dissection 4 Parts

**Item Code :** 4053.2008.01

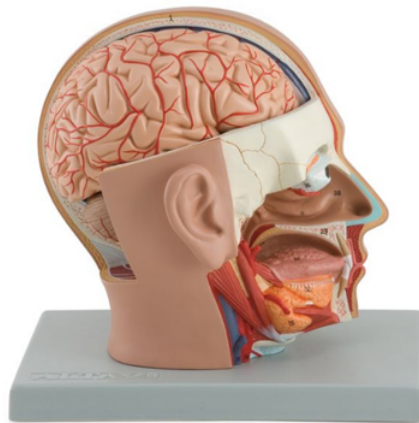
**Item Description :**

Life size head model is composed of 4 parts, as follows:

- Half brain, features the internal structure of the cerebrum, including blood vessels
- Half of the cerebellum • Eye with optic nerve

The right side of the face is dissected in sagittal and horizontal section, showing many significant internal features of the skull and brain, as well as the entire oronasal cavity.

**Item Image :**



Cat. No.

4053.2008.01